

Bexar-Bulverde Fire Department

Bexar County ESD No.3

Bexar-Bulverde Fire Department

Accepting Applications for Firefighter/EMT

Bexar-Bulverde Fire Department proudly serves the citizens of northern Bexar County, covering 47.5 square miles and 62,500 residences. Operating out of four stations (three engines and two ladders), with a fourth engine to be delivered in 2024, the department responds to 3,800 calls for service annually and continues to grow. BBFD currently employs 73 full-time operational staff and holds an ISO rating of 1.

Minimum Requirements:

- TCFP Structural Basic or Higher
- EMT – Basic (Paramedic Preferred)
- NIMS 100, 200, 700, 800
- Courage to be Safe
- Traffic Safety Course
- TDPS Class B (must obtain within 6 months)

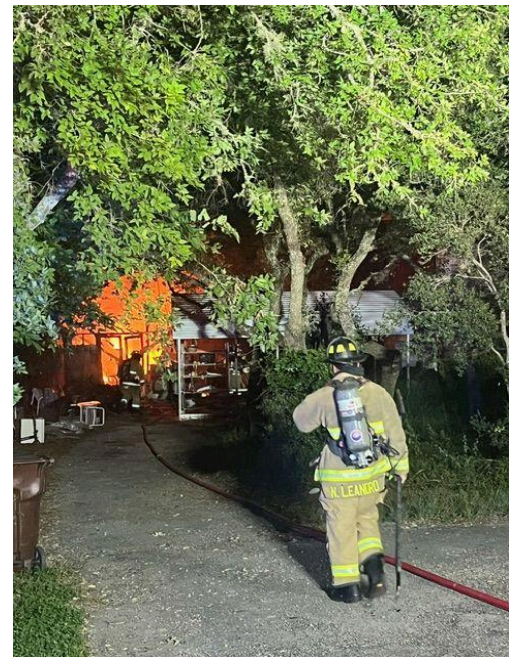
Application Process:

- **Application Deadline:** September 9
- **Ergometric Test:** September 20
- **Physical Agility Test:** September 20
- **Panel Interview**
- **Drug Test**
- **Conditional Job Offers**
- **Tentative Start Date:** October 14

Copy and Paste Hyperlink -

https://docs.google.com/forms/d/e/1FAIpQLScfD0G9cW4bLcDsvASIMD-RZ-GG-LRnOtThmCkFg4b1FYGV5w/viewform?vc=0&c=0&w=1&flr=0&usp=mail_form_link

Contact Assistant Chief George Amen with any questions:
(210) 997-6470 or george.amen@bbulvfd.org.



Bexar-Bulverde Fire Department

Bexar County ESD No.3

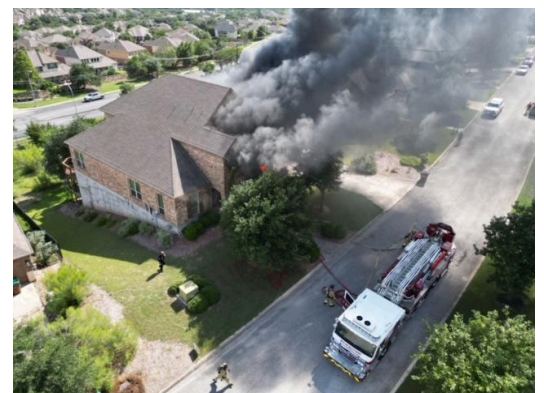
Firefighter/Paramedic: \$58,406 - \$71,265 DOE

Firefighter/EMT: \$53,913 - \$64,902 DOE

Benefits Include:

- **Schedule:** 48/96
- **Retirement:** Texas County & District Retirement System (TCDRS) 7% 2.5:1 matching.
- **Sick Time:** 144 hours annually, with carry-over up to 576 hours.
- **PTO:** 168 hours annually, increasing with tenure.
- **Floating Holidays:** 48 additional hours per year.
- **Holidays:** 10 recognized holidays at double pay per year.
- **Healthcare Coverage:** 100% employee and 50% family.
- **Dental and Vision:** 100% coverage for the employee.
- **Short and Long-Term Disability:** 100% coverage for the employee.
- **Life Insurance:** \$50,000 with triple indemnity provided to the employee.
- **Occupational Cancer Insurance**
- **Certification/Incentive Pay**

Service Credit: Candidates with previous career experience may receive service credit applied towards the salary step pay program up to Step 3.



Contact Assistant Chief George Amen with any questions:
(210) 997-6470 or george.amen@bbulvfd.org.